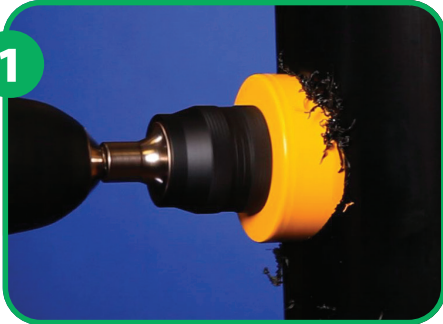


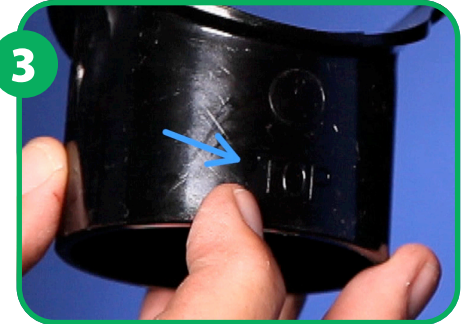
## Step by step installation guide - Strap on Boss (SP319)



1 Cut a 54mm hole into the soil pipe.



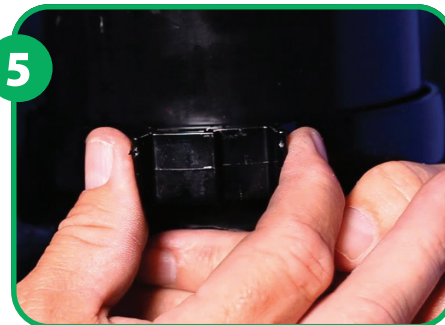
2 Solvent weld around the hole and the flange of the Strap on Boss.



3 The Strap on Boss has a built in fall of 2½ degrees. The word 'top' is embossed on the fitting to show the correct way up.



4 Push fittings together to secure bond.



5 Squeeze the clips at the back together to secure the Strap on Boss to the soil pipe.



6 **For Push-Fit 32/40/50mm connections** to pipe, use rubber boss adaptors SP10/11/12.



7 **For Solvent Weld 32/40/50mm connections**, use solvent weld adaptors SP20/21/22. Solvent cement fittings together to secure bond.



Roofline, Window and Cladding Systems



Rainwater Systems



Soil & Waste Systems



Underground Drainage Systems



MDPE Systems



Hot & Cold Plumbing Systems